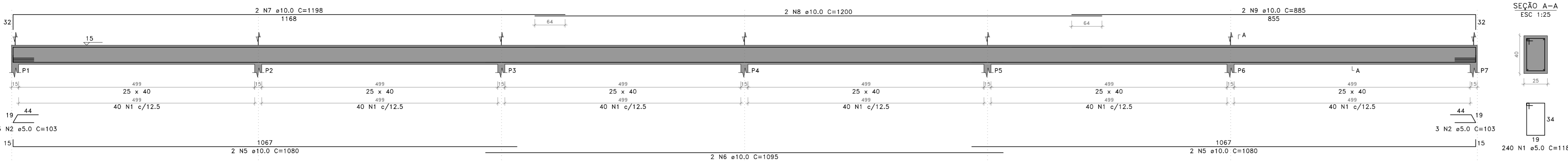


### V101 (25 x 40)



Relação do aço

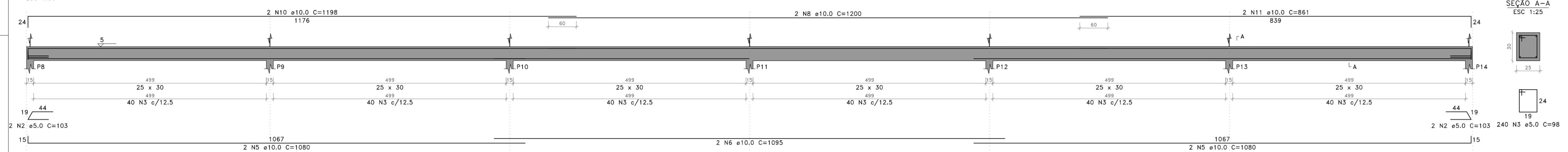
AÇO	N	DIAM (mm)	QUANT	C.UNIT (cm)	C.TOTAL (cm)
CA60	1	5.0	558	118	65844
	2	5.0	10	103	1030
	3	5.0	240	98	23520
CA50	4	6.3	16	109	1744
	5	10.0	8	1080	8640
	6	10.0	4	1095	4380
	7	10.0	2	1198	2396
	8	10.0	4	1200	4800
	9	10.0	2	885	1770
	10	10.0	2	1198	2396
	11	10.0	2	861	1722
12	12.5	4	562	2248	
13	12.5	6	604	3624	
14	12.5	10	584	5840	
15	12.5	10	622	6220	

Resumo do aço

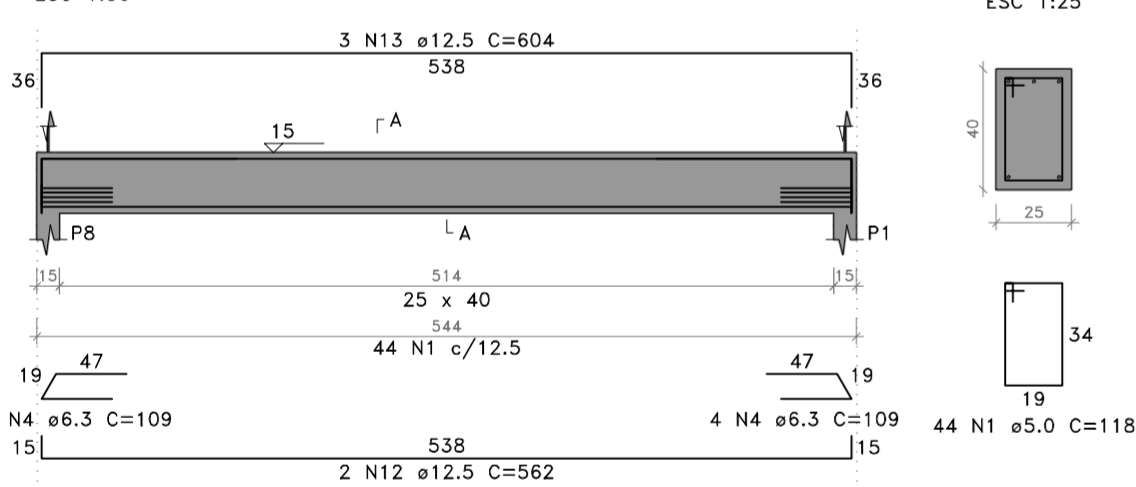
AÇO	DIAM (mm)	C.TOTAL (m)	QUANT (Barras)	PESO (kg)
CA50	6.3	17.5	2	4.3
10.0	261.1	22	160.9	
12.5	179.4	15	172.7	
CA60	5.0	904	-	139.3
<b>PESO TOTAL (kg)</b>				
CA50			338	
CA60			139.3	

Volume de concreto (C-30) = 9.34 m³  
Área de forma = 100.06 m²

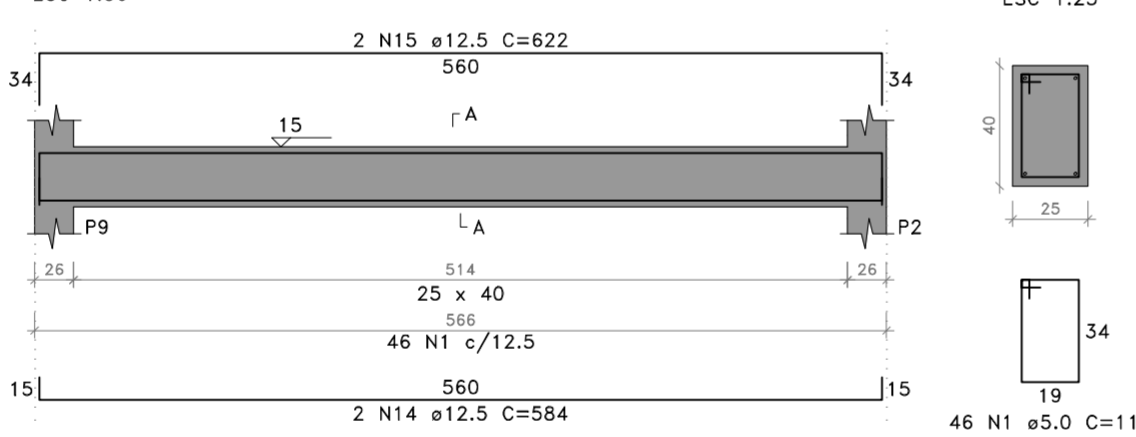
### V102 (25 x 30)



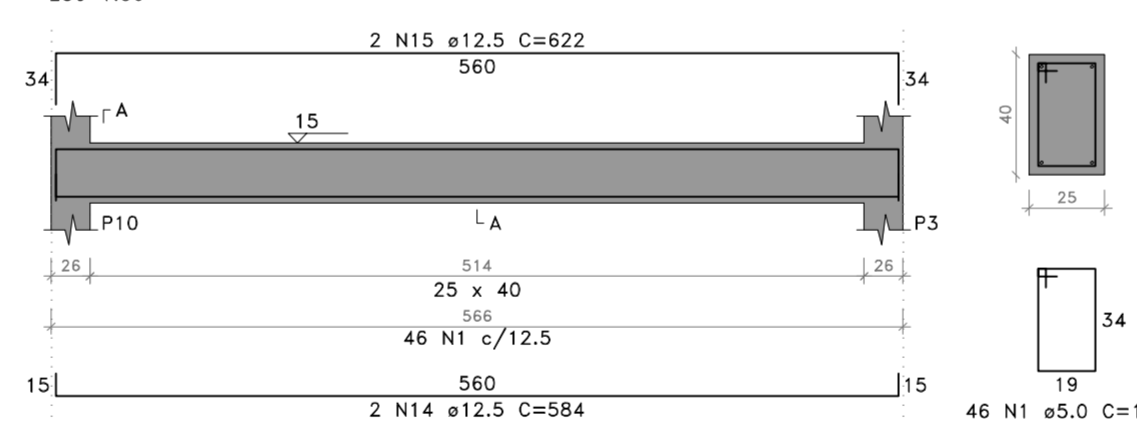
### V103 (25 x 40)



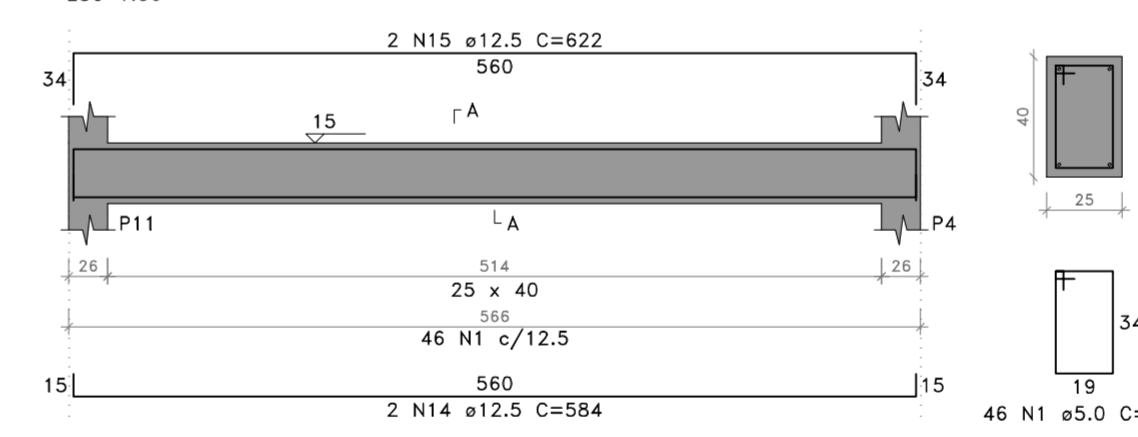
### V104 (25 x 40)



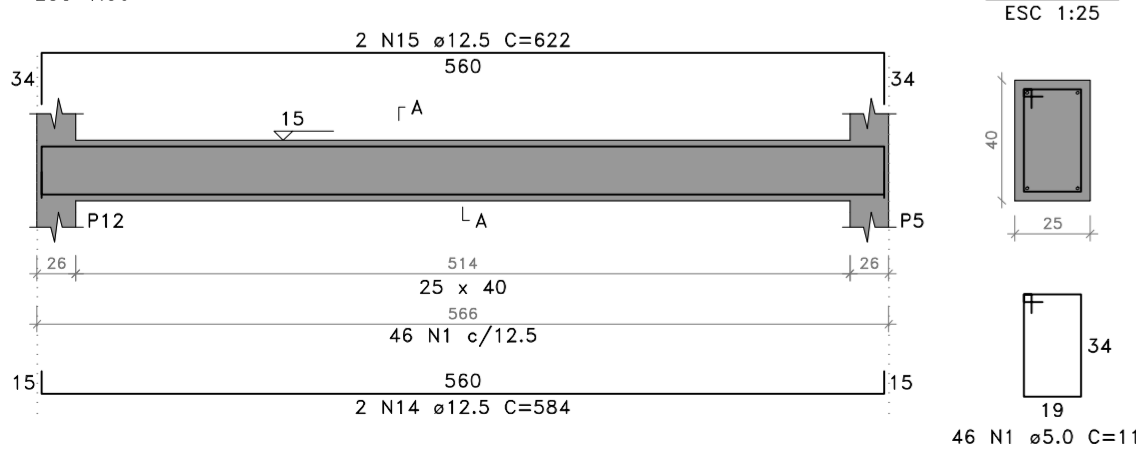
### V105 (25 x 40)



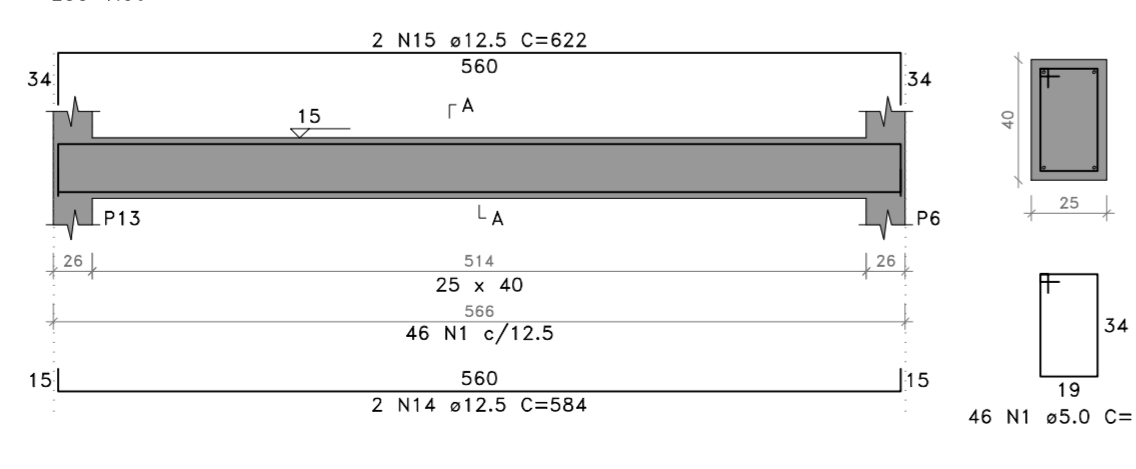
### V106 (25 x 40)



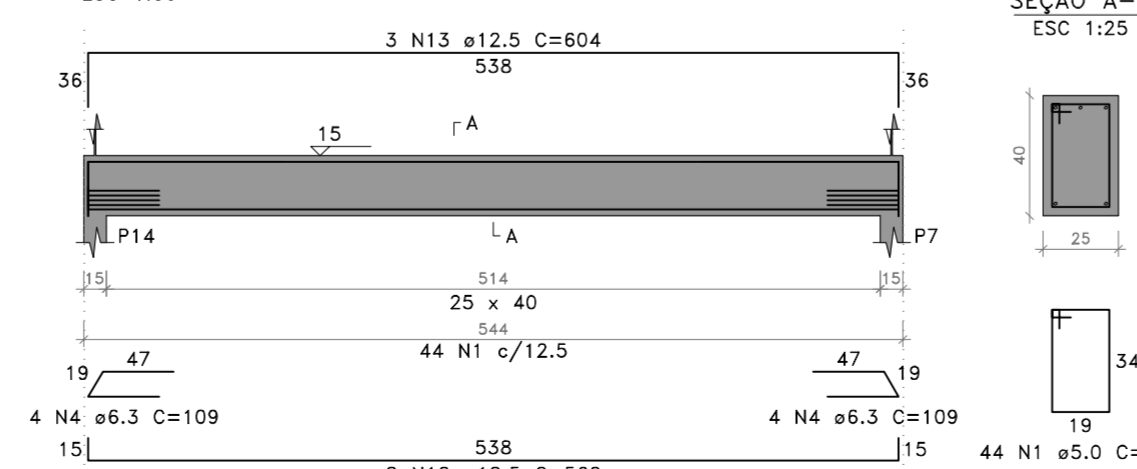
### V107 (25 x 40)



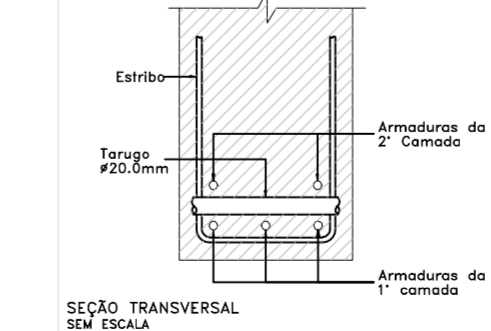
### V108 (25 x 40)



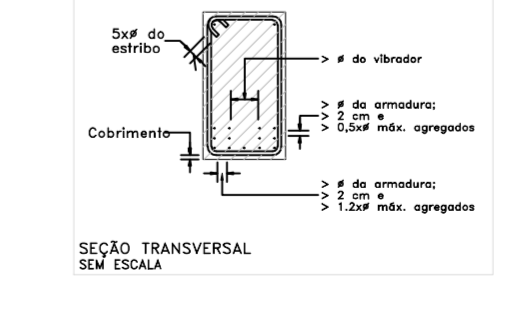
### V109 (25 x 40)



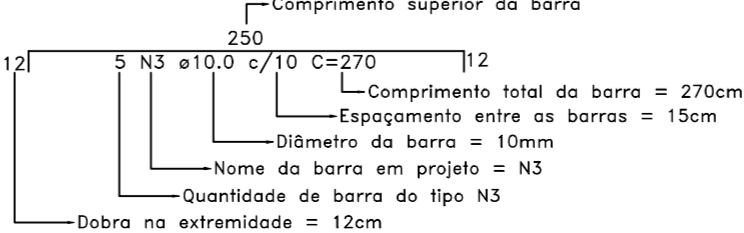
#### DETALHE 03 - ESPAÇADOR PARA CAMADAS



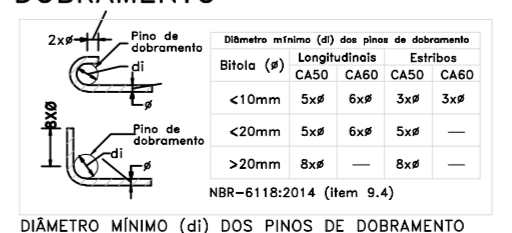
#### DETALHE 01 - DISPOSIÇÃO DE ARMADURA EM VIGAS



#### DETALHE 04 - ARMADURA DA VIGA

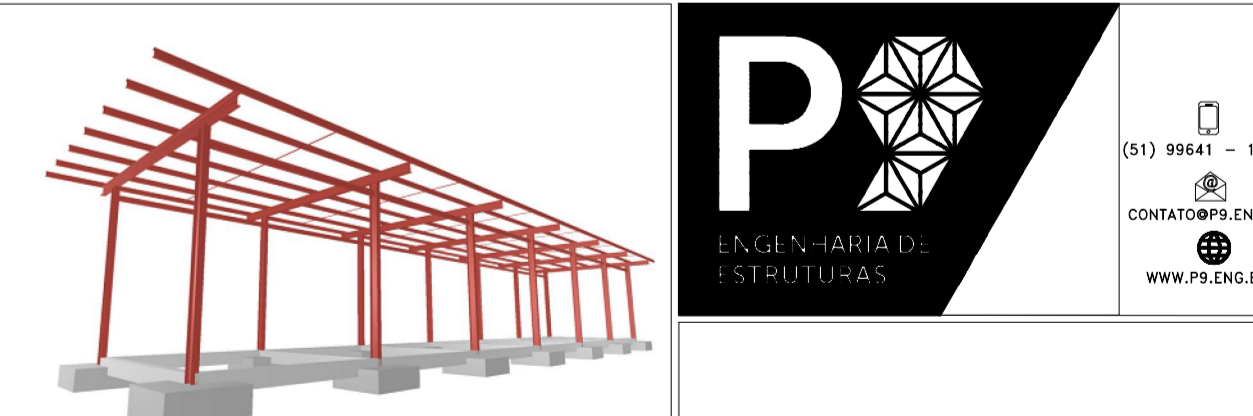


#### DETALHE 02 - DOS PINOS DE DOBRAMENTO



### PROJETO ESTRUTURAL

#### 4- PAV. TÉRREO - VIGAS - 0195



RESP. TÉCNICO PROJETO ARQUITETÔNICO:  
MUNICÍPIO DE FAZENDA VILANOVA

RESP. TÉCNICO PROJETO ESTRUTURAL:  
ALAN RODRIGO SIMSEN  
CREARS 208.450

OBRA: ESTAÇÃO DE DESEMBARQUE - EMEF EDGAR DA ROSA CARDOSO

PROPRIETÁRIO: ASSINATURA:

MUNICÍPIO DE FAZENDA VILANOVA - RS

ENDEREÇO:  
AVENIDA RIO GRANDE DO SUL, 192 - RS

DESCRIÇÃO:  
VIGAS DO PAVIMENTO TÉRREO

ÁREA: 257,60m² ESC.: INDICADA DESENHO: Alana DATA: 24/07/2020 REVISÃO: REV. 00

PRANCHA:  
4